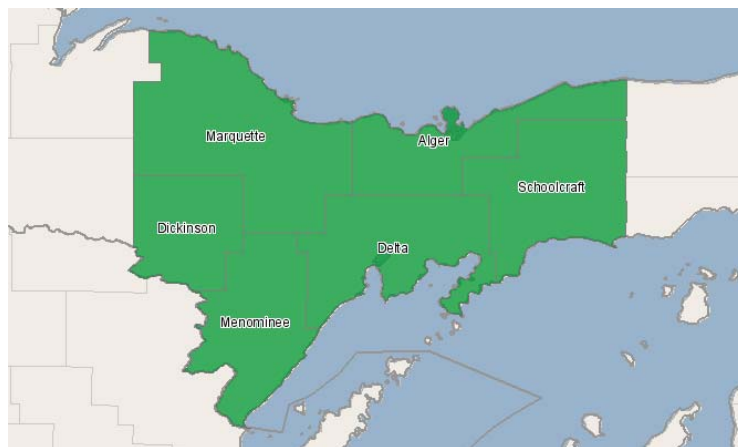


# Michigan Works! The Job Force Board

2950 College Avenue  
Escanaba, Michigan 49829  
906.789.0558

## Occupation Overview Report



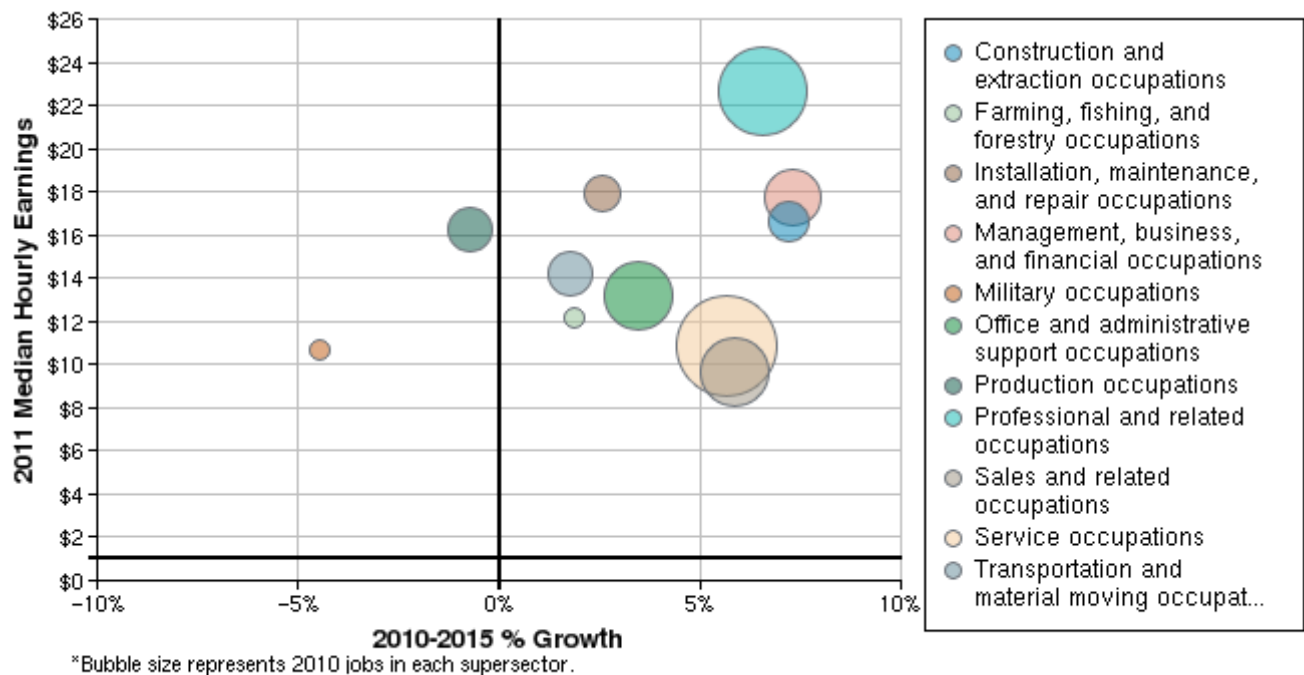
## Region Info

### Region: 6 County Region

County Areas: Alger, Michigan (26003), Delta, Michigan (26041), Dickinson, Michigan (26043), Marquette, Michigan (26103), Menominee, Michigan (26109), Schoolcraft, Michigan (26153)

## Occupation Size and Growth

### 2010 - 2015 Size and Growth

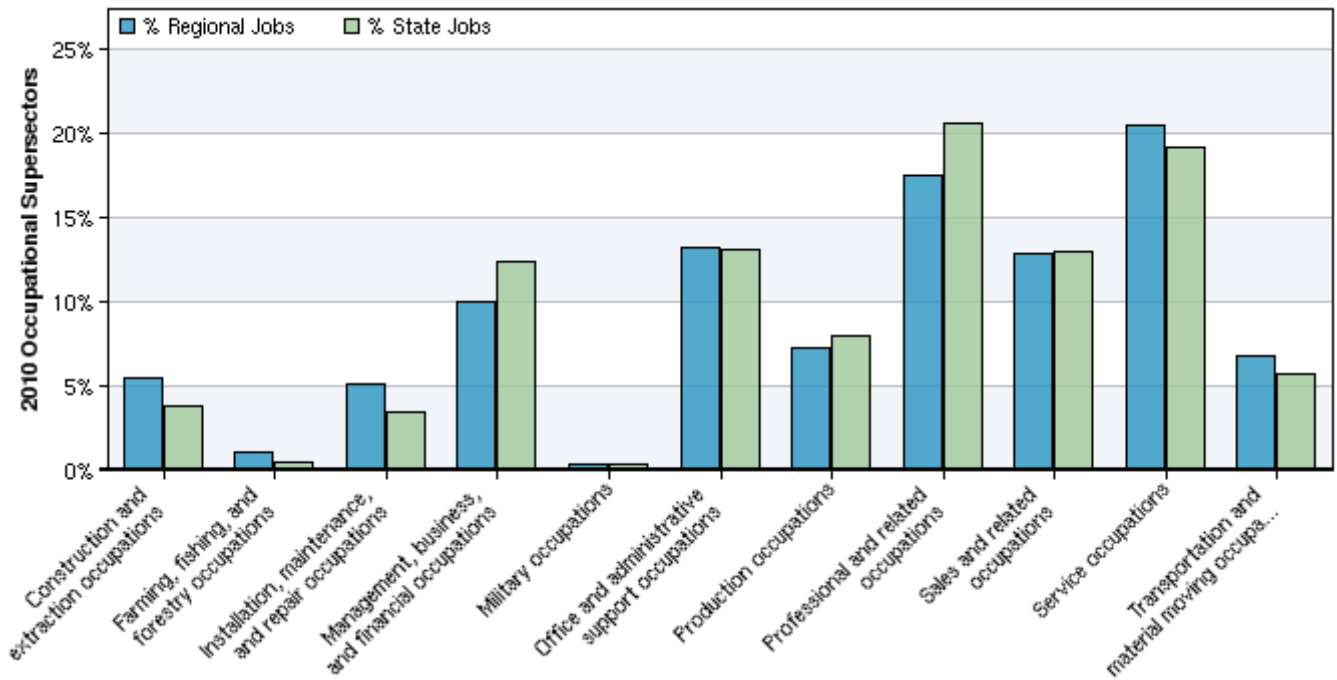


Description	2010 Jobs	2015 Jobs	Growth	% Growth	2011 Median Hourly Earnings
Construction and extraction occupations	4,739	5,080	341	7%	\$16.67
Farming, fishing, and forestry occupations	902	919	17	2%	\$12.12
Installation, maintenance, and repair occupations	4,461	4,575	114	3%	\$17.92
Management, business, and financial occupations	8,665	9,296	631	7%	\$17.74
Military occupations	336	321	-15	-4%	\$10.72
Office and administrative support occupations	11,452	11,851	399	3%	\$13.16
Production occupations	6,276	6,230	-46	-1%	\$16.22
Professional and related occupations	15,244	16,246	1,002	7%	\$22.66
Sales and related occupations	11,219	11,875	656	6%	\$9.67
Service occupations	17,858	18,868	1,010	6%	\$10.85
Transportation and material moving occupations	5,901	6,006	105	2%	\$14.18

Description	2010 Jobs	2015 Jobs	Growth	% Growth	2011 Median Hourly Earnings
Total	87,054	91,266	4,212	5%	\$15.07

Source: EMSI Complete Employment - 2011.4

## 2010 Occupational Makeup



Description	2010 Regional Jobs	% Regional Jobs	2010 State Jobs	% State Jobs
Construction and extraction occupations	4,739	5.4%	188,560	3.8%
Farming, fishing, and forestry occupations	902	1.0%	20,915	0.4%
Installation, maintenance, and repair occupations	4,461	5.1%	173,240	3.5%
Management, business, and financial occupations	8,665	10.0%	620,378	12.4%
Military occupations	336	0.4%	20,755	0.4%
Office and administrative support occupations	11,452	13.2%	651,739	13.1%
Production occupations	6,276	7.2%	395,937	7.9%
Professional and related occupations	15,244	17.5%	1,029,257	20.6%
Sales and related occupations	11,219	12.9%	646,915	13.0%
Service occupations	17,858	20.5%	959,856	19.2%
Transportation and material moving occupations	5,901	6.8%	285,355	5.7%

Source: EMSI Complete Employment - 2011.4



## Data Sources and Calculations

---

### Occupation Data

Organizing regional employment information by occupation provides a workforce-oriented view of the regional economy. EMSI's occupation data are based on EMSI's industry data and regional staffing patterns taken from the Occupational Employment Statistics program (U.S. Bureau of Labor Statistics). Wage information is partially derived from the American Community Survey. The occupation-to-program (SOC-to-CIP) crosswalk is based on one from the U.S. Department of Education, with customizations by EMSI.

### State Data Sources

This report uses state data from the following agencies: Michigan Department of Labor and Economic Growth, Bureau of Labor Market Information and Strategic Initiatives.